

THE LONDON RESORT

The London Resort Development Consent Order

BC080001

Environmental Statement Volume 3: Figures

Figure 18.8 – Landscape masterplan

Document reference: 6.3.18.8

Revision: 00

December 2020

Planning Act 2008

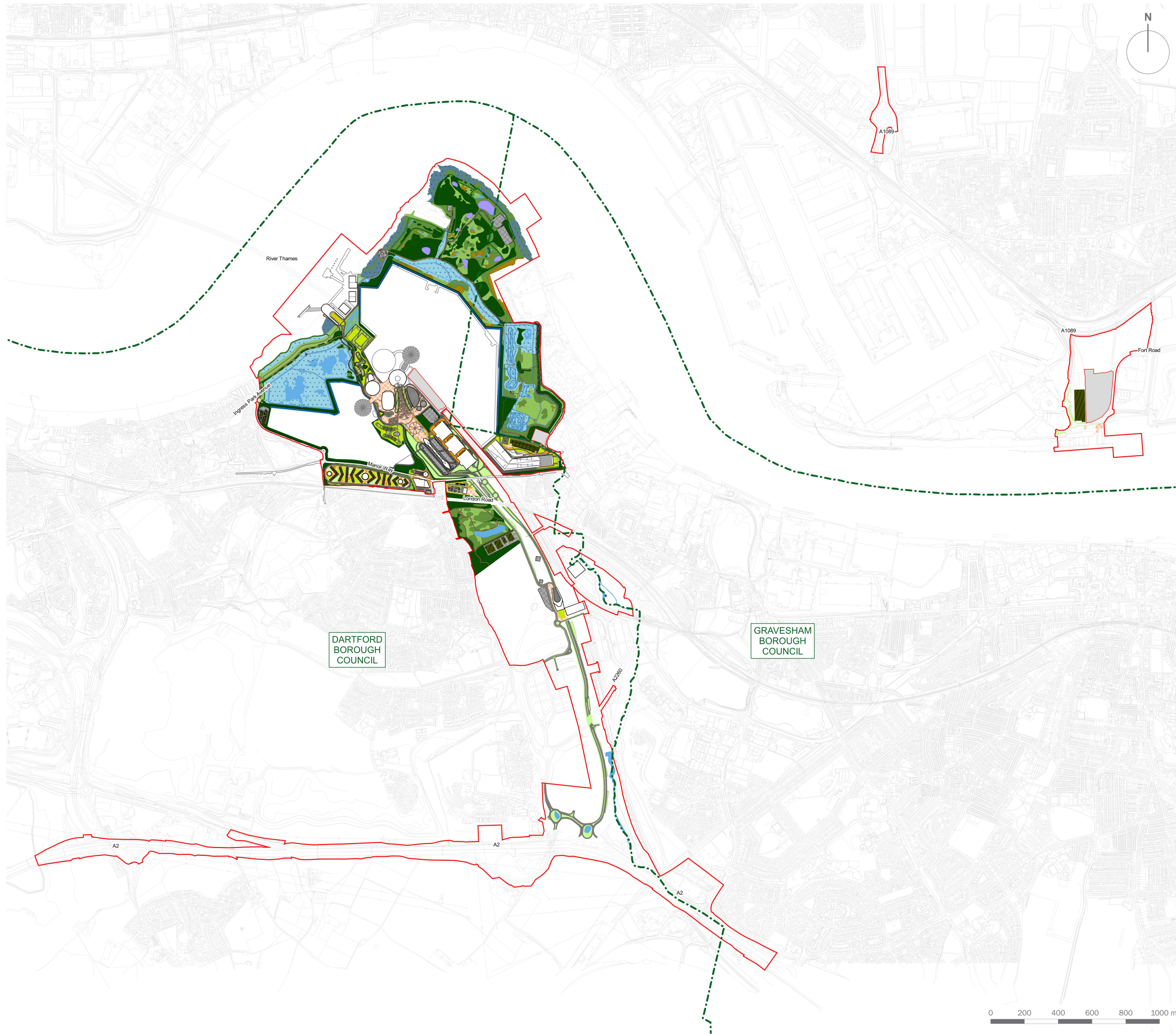
The Infrastructure Planning (Applications: Prescribed Forms and Procedure) Regulations 2009

Regulation 5(2)(a)

The Infrastructure Planning (Environmental Impact Assessment) Regulations 2017

Regulation 12(1)

[This page is intentionally left blank]



- DCO Order Limits
- Local Authority Boundary
- Area Outside Order Limits
- Buildings
- Open Grassland and Sparse Vegetation
- Ornamental Shrub Planting
- Hoggin Path
- Lawn
- Green Roofs
- Brown Roofs
- Boardwalks (Width Varies)
- Hardstanding
- Ditches and Perimeter Swale
- Leachate Ponds
- Ponds
- Bare Disturbed Substrate
- Rain Garden Planting
- Woodland and Dense Scrub
- Reedbeds
- Permanent Water Bodies
- Plaza and Paved Public Open Space
- Mown Path
- Salt Marsh
- Scattered Scrub and Rank Grassland
- Wildflower Meadow Verge with Trees
- Highways Land

client
The London Resort Company Holdings Ltd

project title
The London Resort

drawing title
Figure 11.15 Landscape Masterplan

date	07 DECEMBER 2020	drawn by	JGo
drawing number	edp5988_d100e	checked	PW
scale	1:11,000 @ A1	QA	



Registered office: 01285 740427 - www.edp-uk.co.uk - info@edp-uk.co.uk